



## **NIHS RESIDENCY TRAINING PROGRAM**

### **Emergency Medicine**

### **Final Written Examination**

#### **Examination Format:**

National Institute for Health Specialties NIHS (Emirate Board) final specialty written examination shall consist of two papers each with 100-125 Single Best Answer MCQs. Up to 10 % unscored items can be added for pretesting purposes.

#### **Passing Score:**

The pass mark in the Final Written Examination will be determined according to the scientific standards and based on reliable practices in assessment.





### **Suggested References:**

1. Rosen's Emergency Medicine - Concepts and Clinical Practice - Latest Edition
2. Tintinalli's Emergency Medicine: A Comprehensive Study Guide – Latest Edition
3. Roberts and Hedges' Clinical Procedures in Emergency Medicine - Latest Edition
4. Journal club articles
6. Professionalism and Ethics, Handbook for Residents, Practical guide, Prof. James Ware, Dr. Abdulaziz Fahad Alkaabba, Dr. Ghaiath MA Hussein, Prof. Omar Hasan Kasule, SCFHS, Latest Edition.
7. Essentials of Patient Safety, SCHS, Latest Edition.

### **Note:**

This list is intended for use as a study aid only. NIHS does not intend the list to imply endorsement of these specific references, nor are the exam questions necessarily taken solely from these sources.

### **Blueprint Outlines:**

No.	Sections	Percentage
1	Cardiac	9%
2	Trauma	10%
3	Toxicology / Environmental	7%
4	Orthopedic / Musculoskeletal	7%
5	Head/ Eyes/Ears/ Nose/ Throat	3%
6	Abdominal/ Gastrointestinal	5%
7	Obstetrics / Gynecology	5%
8	Neurology / Psychiatry	5%
9	Endocrine / Metabolic	3%
10	Thoracic / pulmonary	5%
11	Hematology / Oncology	3%





12	Immune / Inflammatory	5%
13	Nephrology / Urology	5%
14	EMS / Disaster	2%
15	Dermatology / Cutaneous / Infectious Disease	5%
16	Pediatrics	10%
17	Procedures and skills including POCUS	5%
18	Ethics/Administration	3%
19	Others	3%
<b>Total</b>		<b>100%</b>

**Note:**

- Blueprint distributions of the examination may differ up to +/-5% in each category.
- Percentages and content are subject to change at any time. See the website for the most up-to-date information.
- Exam may include resuscitation, critical care, and procedural skills in the various sections.

Exam may include pediatric age groups and special population (Immunocompromised, solid organ transplant, combative & difficult patient, morbidobesity & others).

- Research, Ethics, Professionalism and Patient Safety are incorporated within the various domains

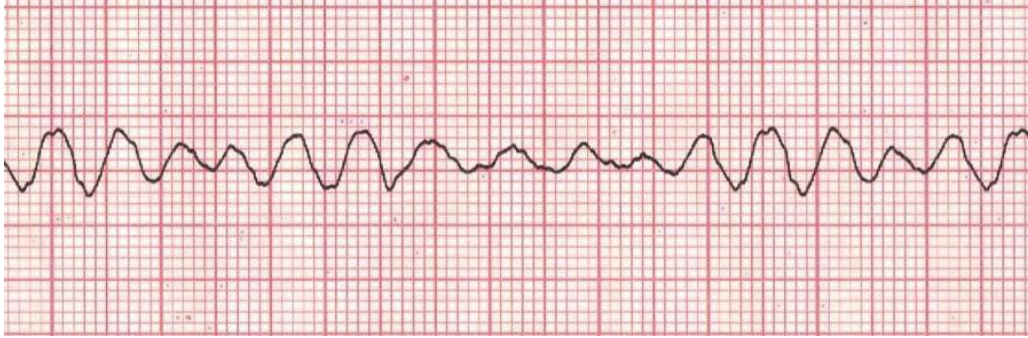




## Example Questions

### EXAMPLE OF K2 QUESTIONS

#### Question 1



A 32-year-old man found in the desert in December. While resuscitating the man, the first rhythm shows ventricular fibrillation, after delivering 1 shock, one dose of epinephrine and chest compression for 2 minutes, the monitor shows the following.

Temperature            18.0° C

Which of the following is the most appropriate next step along with continuous CPR?

- A. NaHCO<sub>3</sub>
- B. Epinephrine
- C. Defibrillation
- D. IV fluids 40° C

### EXAMPLE OF K1

#### Question 2

Which of the following is most suggestive of a severe asthma exacerbation?

- A. O<sub>2</sub> saturation 92 % on room air
- B. Venous Blood Gas PCO<sub>2</sub> 45 mm Hg
- C. Inspiratory and expiratory wheezes
- D. Peak Expiratory Flow Rate 50% of predicted

